

# CASO CLÍNICO

E1 THAÍS BASTOS

# CASO CLÍNICO – Oclusão Ciliarretiniana

A oclusão de arteríolas que nutrem a retina é uma importante causa de baixa de acuidade visual súbita. Neste caso, ilustra-se a oclusão de uma pequena arteríola que sai da circulação da coróide, na margem do disco óptico, e nutre a região da macula e do pólo posterior.

# CASO CLÍNICO

---

- ID: masculino, 53 anos
- Paciente refere moscas volantes, associado a percepção súbita de escotoma em olho direito há três dias. Nega trauma.
- Nega queixas sistêmicas
- Antecedentes oculares: nega
- Antecedentes pessoais: AVC em 2004, dislipidemia, depressão.

# EXAME

---

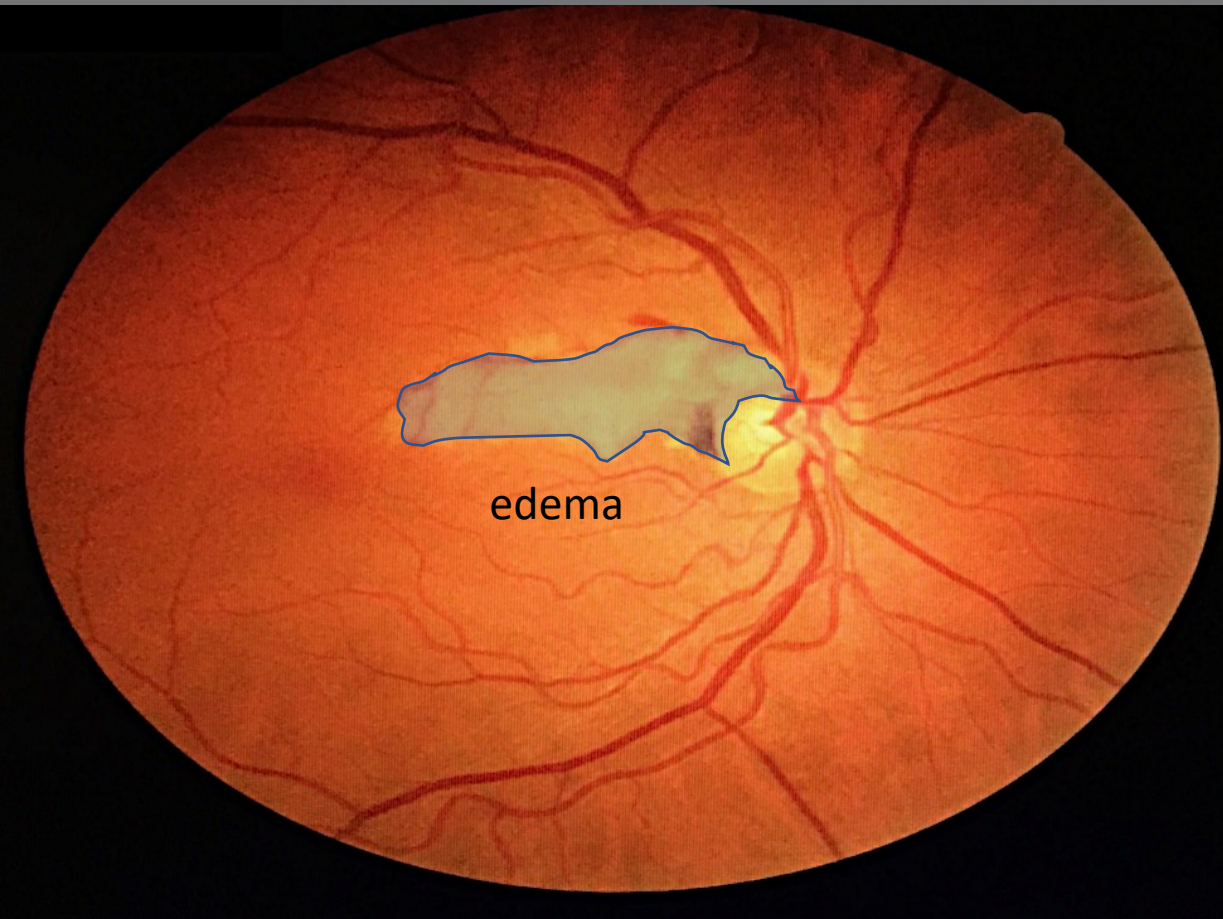
- Avsc

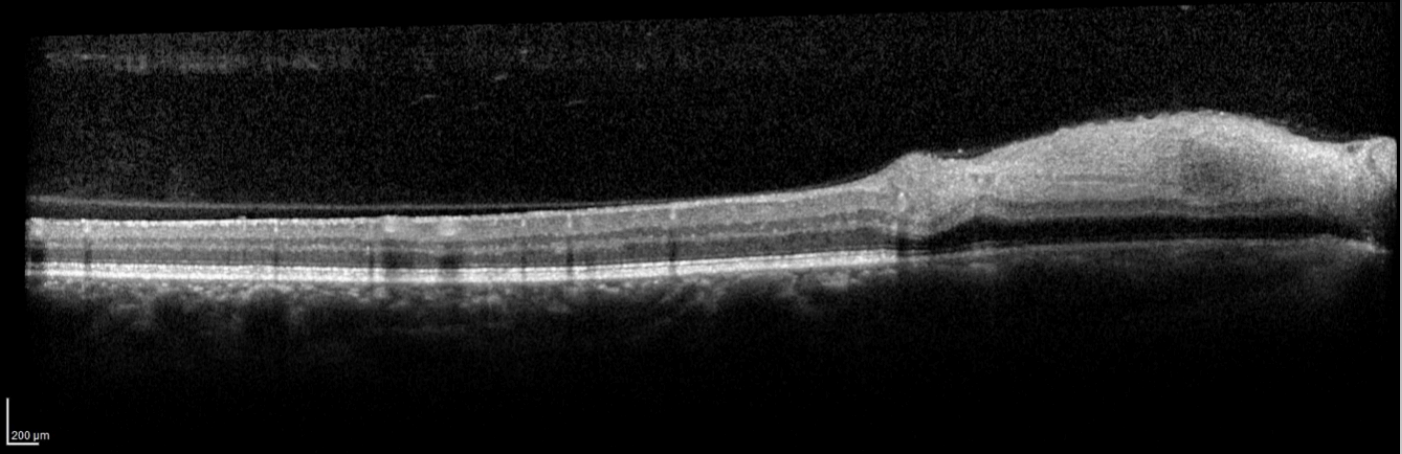
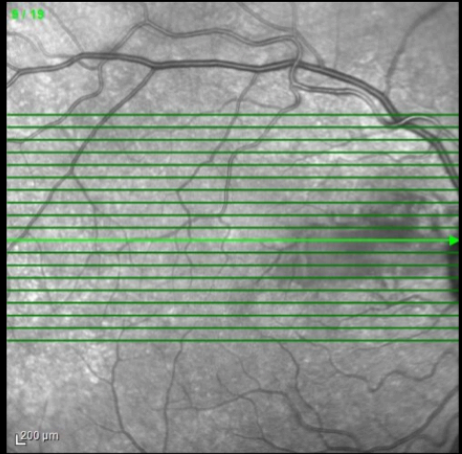
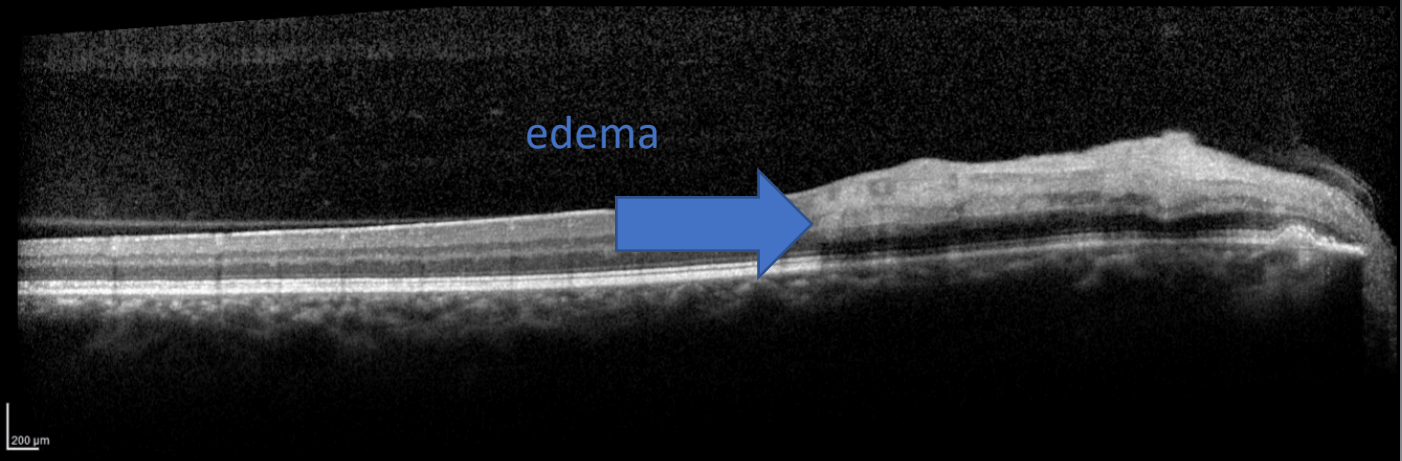
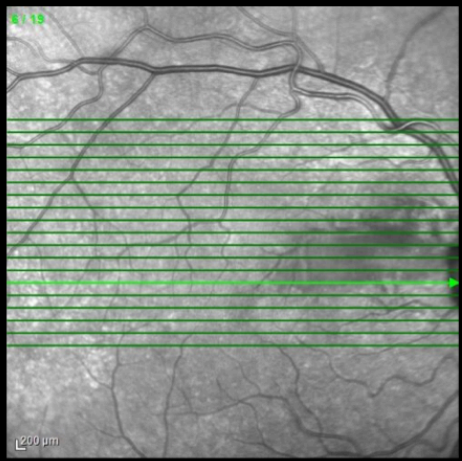
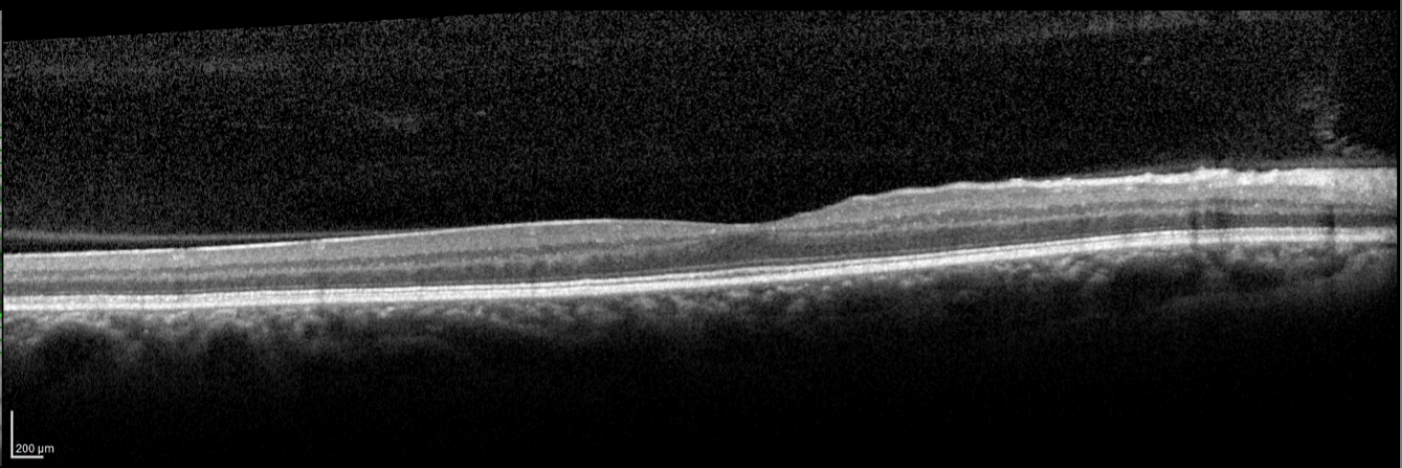
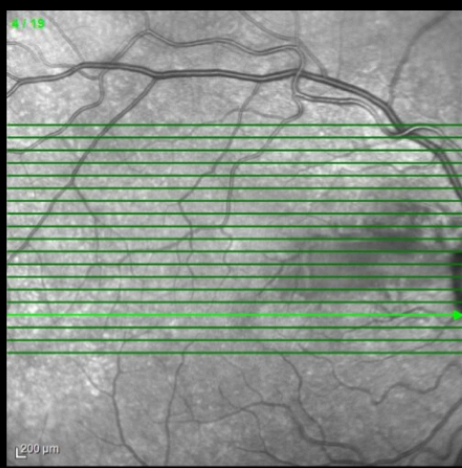
OD 20/50

OE 20/20

- 

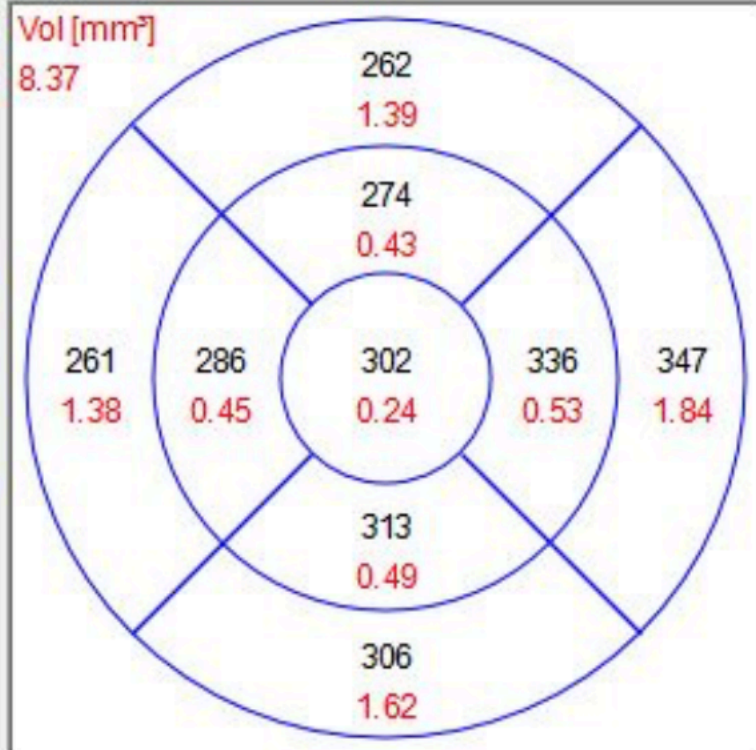
- Biomicroscopia AO: olho calmo, córnea transparente, CA ampla, s/RCA, cristalino transparente.





### Average Thickness [ $\mu\text{m}$ ]

Vol [ $\text{mm}^3$ ]  
8.37



Marker

306  $\mu\text{m}$

Center

306  $\mu\text{m}$

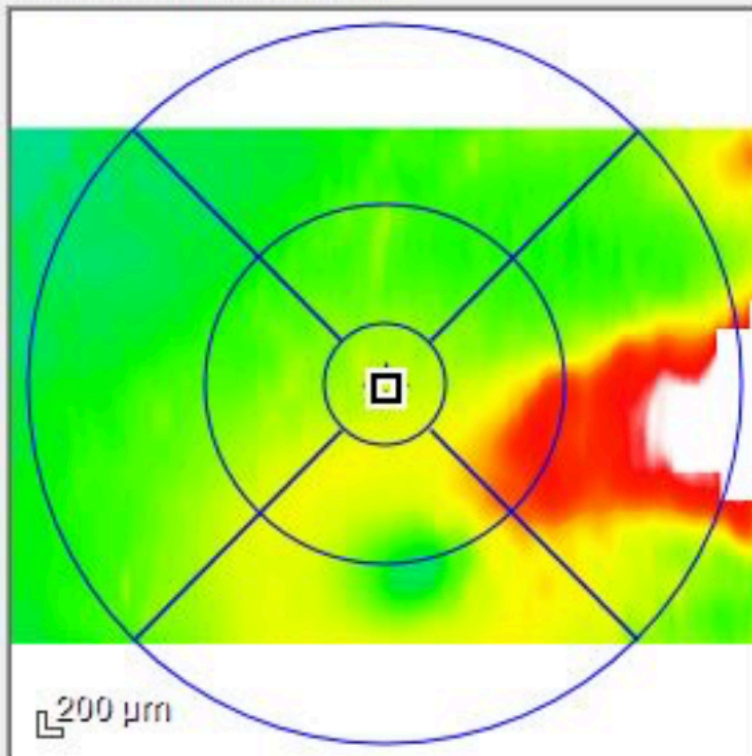
Central Min

283  $\mu\text{m}$

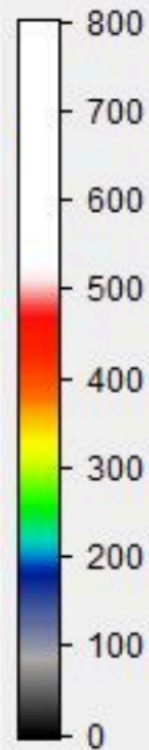
Central Max

324  $\mu\text{m}$

### Retina Thickness [ $\mu\text{m}$ ]



Examination: 07/05/2019



# HIPÓTESE DIAGNÓSTICA/CONDUTA

---

- OCLUSÃO ISOLADA DE ARTÉRIA CILIO-RETINIANA
  
- CD:
  - rastreio de doenças sistêmicas (principalmente arterite de células gigantes)
  - rastreio de fatores de risco trombo-embólicos
  - observação

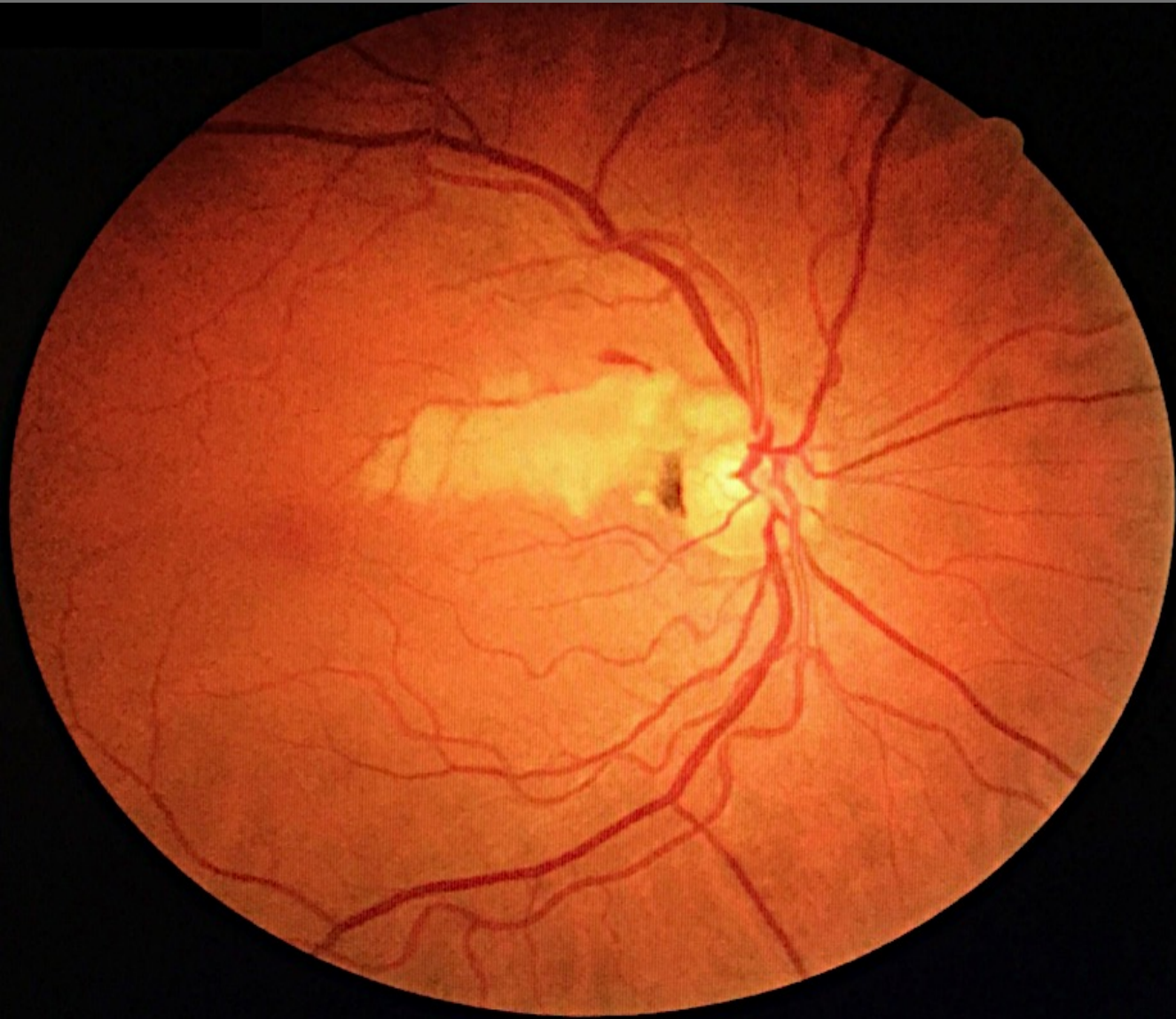


# OCLUSÃO DA ARTÉRIA CILIORRETINIANA

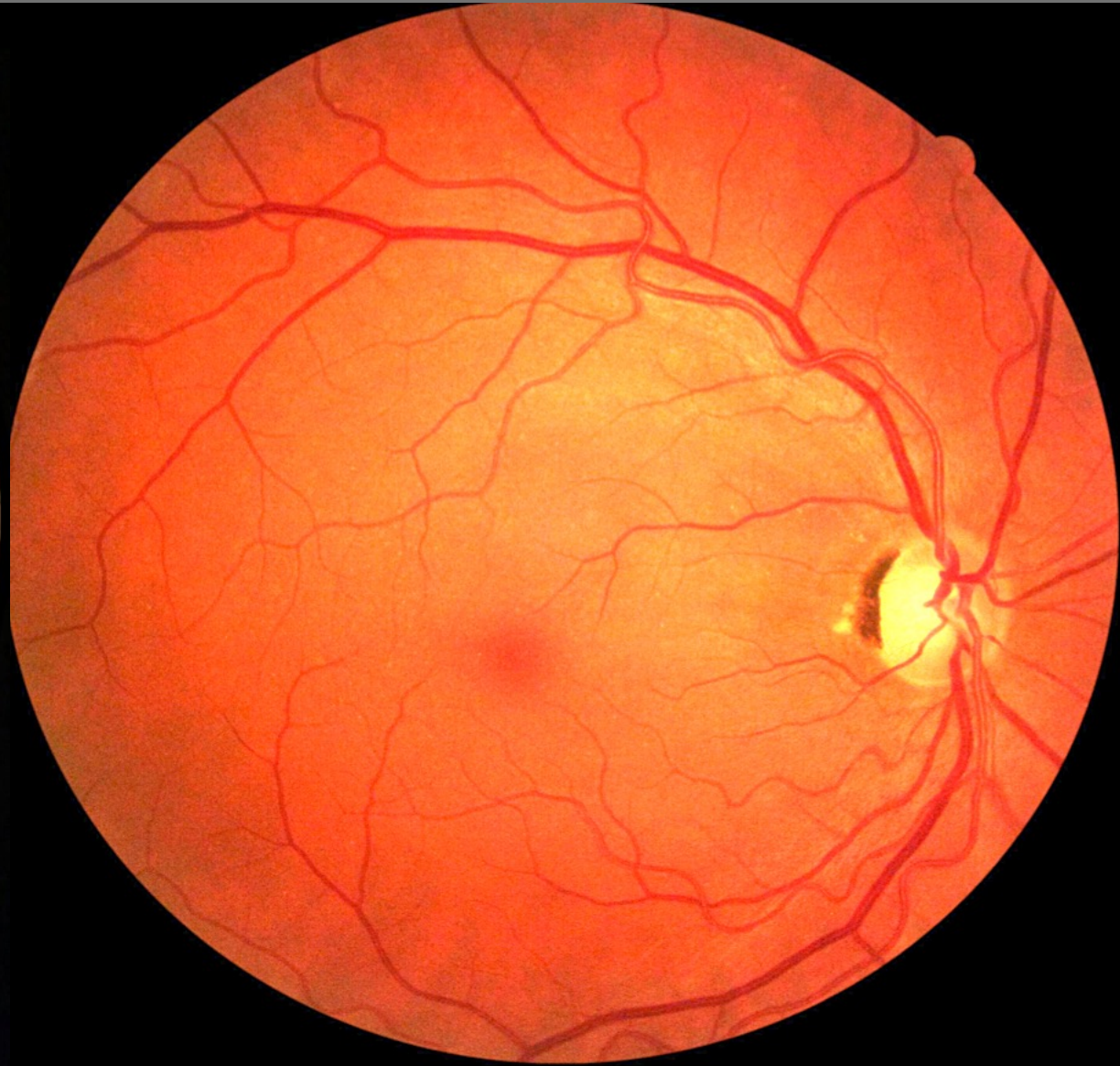
---

- ARTÉRIA CILIORRETINIANA: presente em 20% da população
- Origem na circulação coroidiana.  
Isoladamente, associado a arterite de células gigantes, associada a oclusão de veia central da retina ou associada a neuropatia óptica isquêmica
- Oclusões isoladas são raras: correspondem a menos de 5% das oclusões arteriais da retina
- Quando isolada, tem bom prognóstico (90% atinge visão melhor que 20/40)

07/05

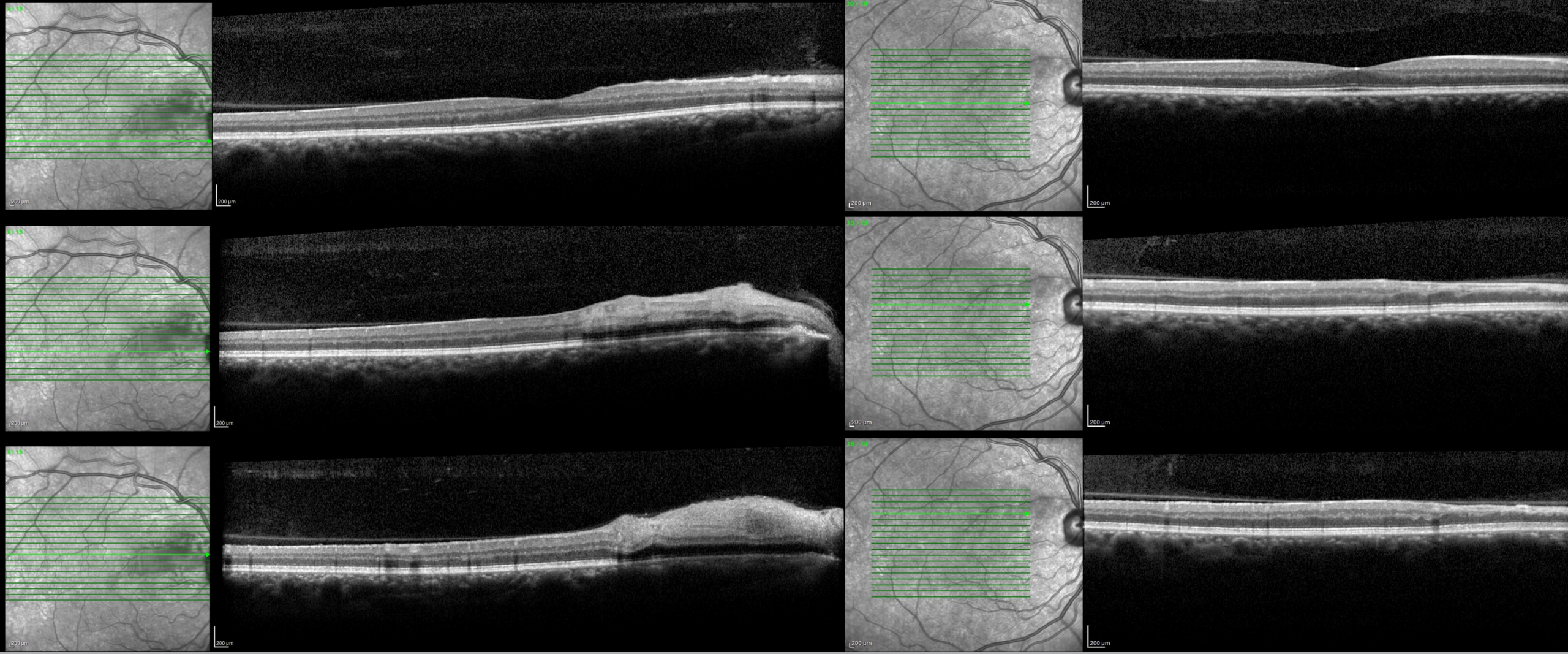
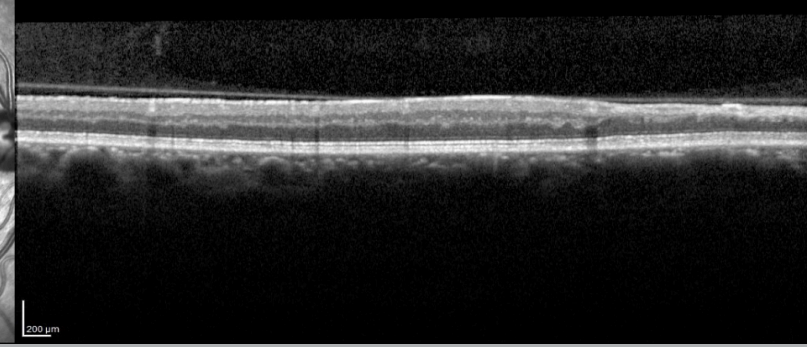
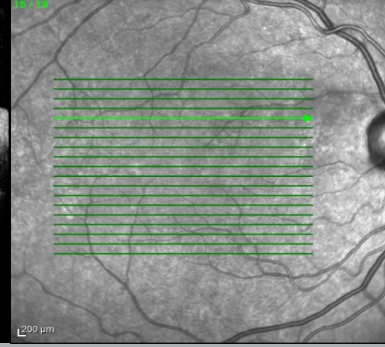
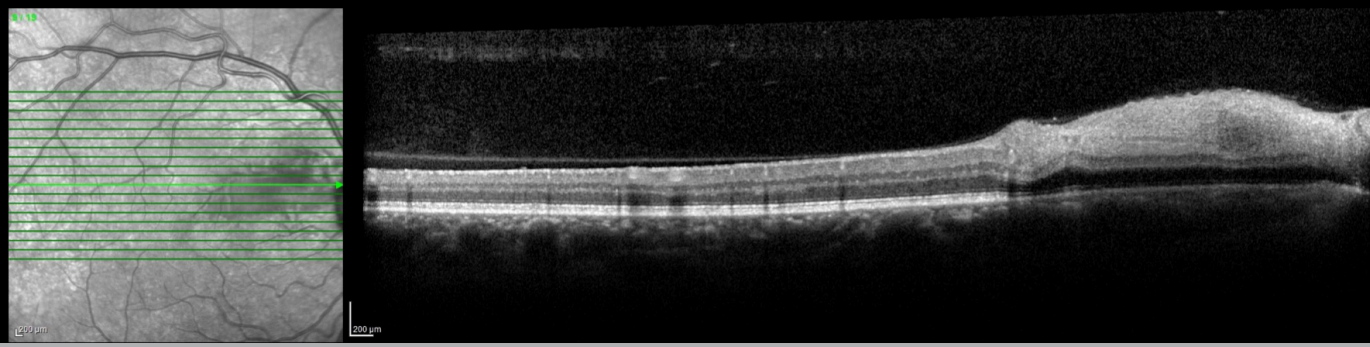
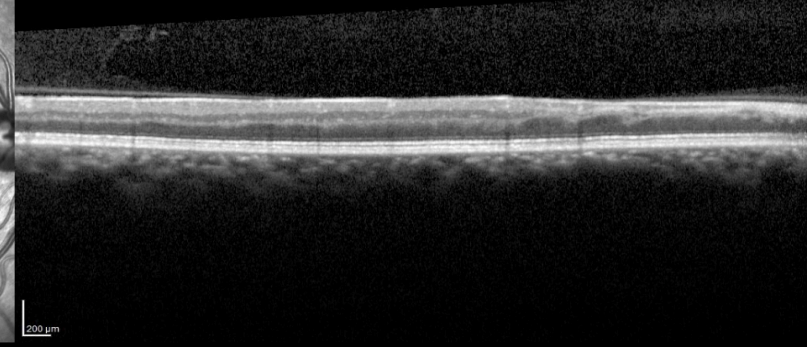
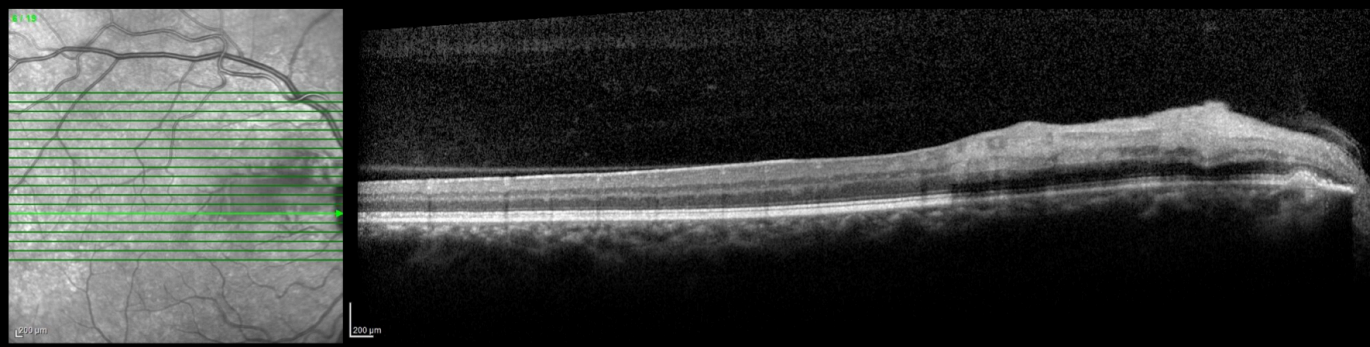
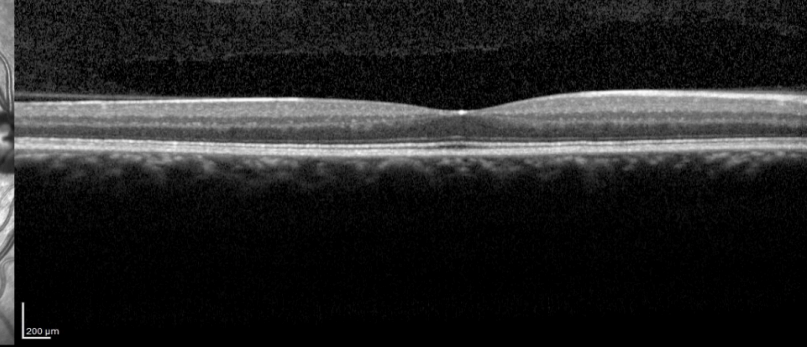
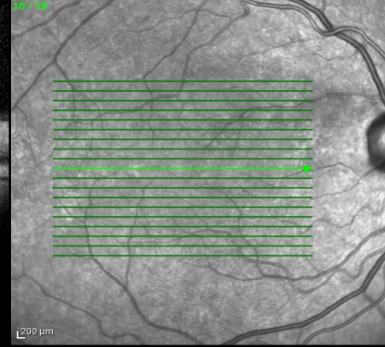
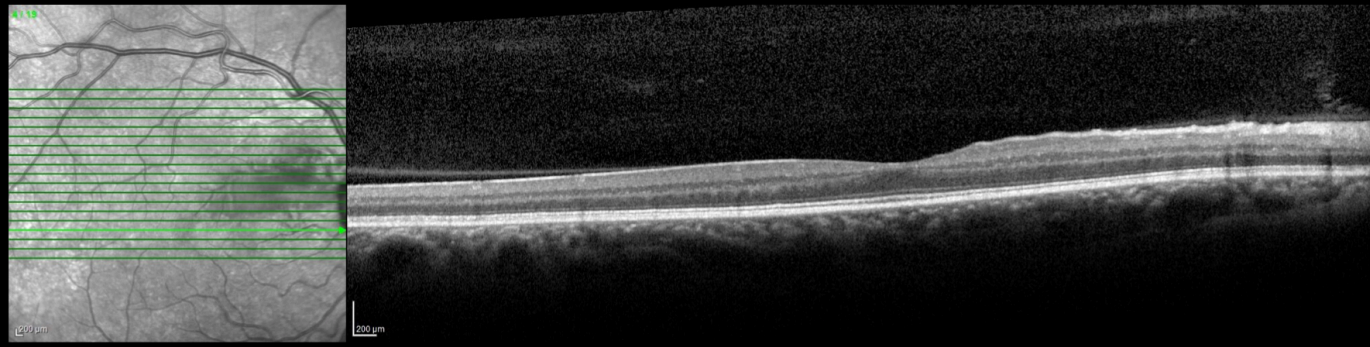


30/07

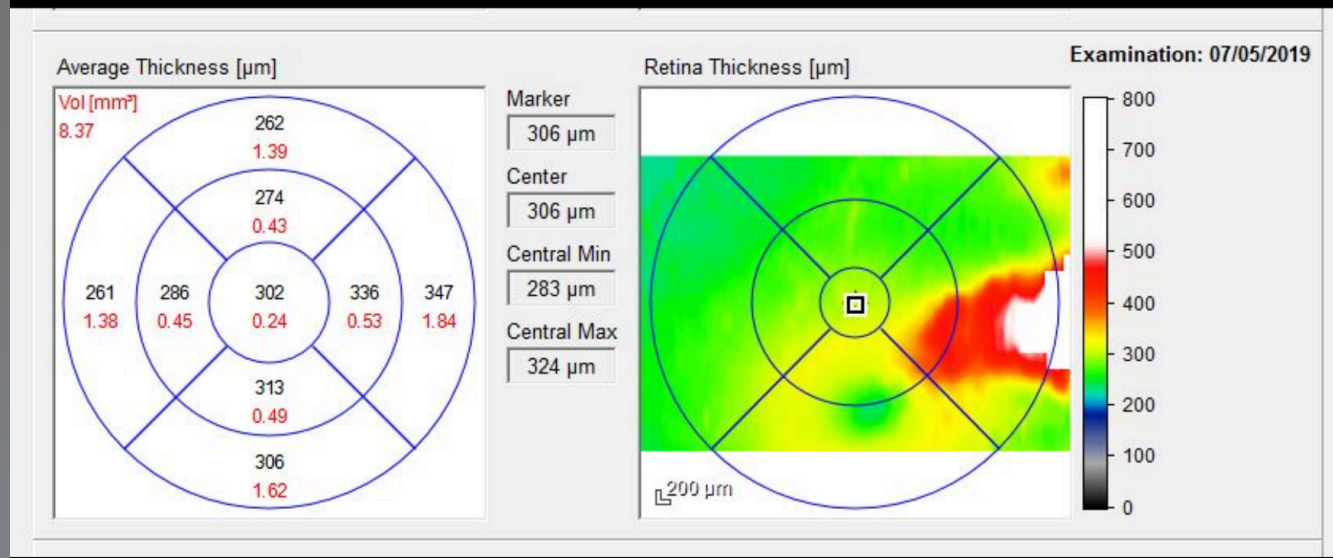


07/05

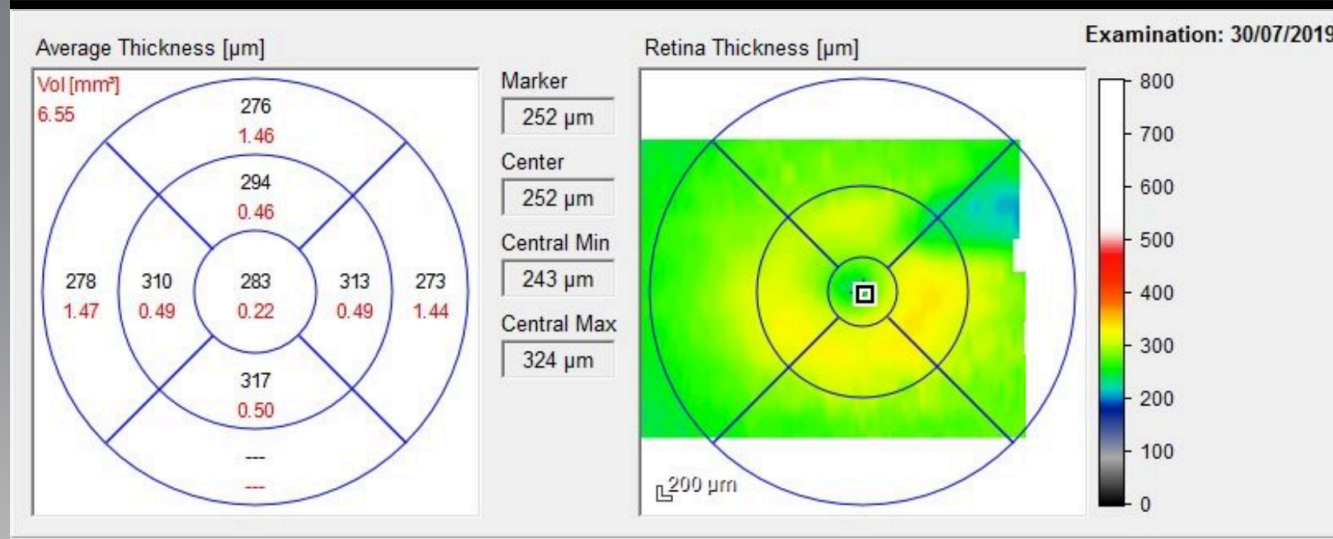
30/07



07/05



30/07



OBRIGADA!